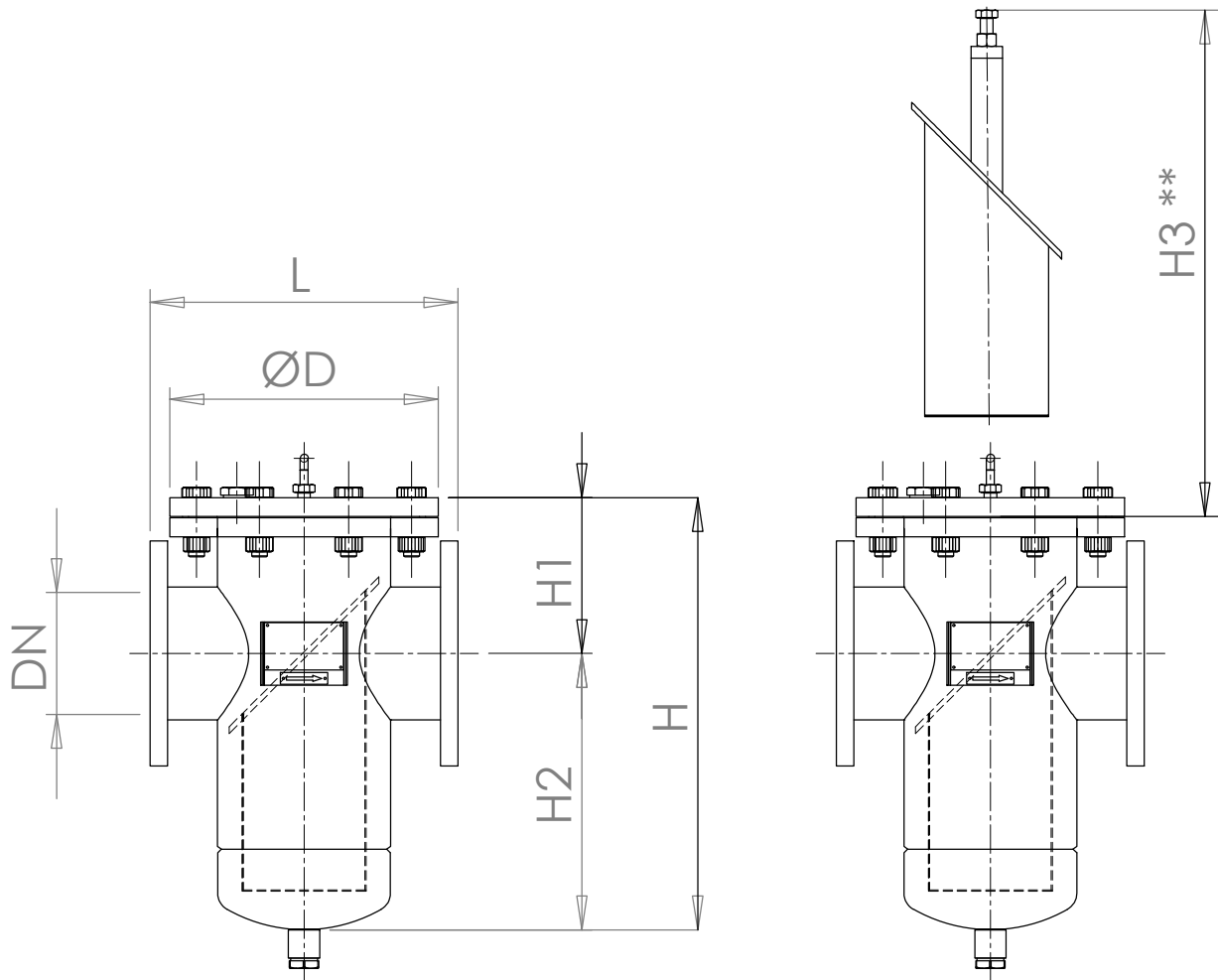


CARBON STEEL BASKET STRAINER, PN10, FIG. 1167

WELDED CONSTRUCTION, SS SIEVE, FLANGE CONNECTION PN10



Basket strainer with FF Flange (DIN EN 1092-1, type 01, PN10)

Welded construction housing in Carbon Steel (*)

Bolts 8.8 galvanized, Nuts 8 galvanized (*)

Installation length "L" acc. to DIN EN 558-1

Sieve build from perforated steel in SS-304

Sieve inside filled with gauze mesh 20 in SS-316 (optional)

Vent plug and drain plug with BSP thread

Gasket material RX PT60, 2 mm, asbestos free

Coating: shotblasted SA 2.5, 1 layer epoxy primer, 1 layer epoxy finish RAL 5015

* others on request

** required free space above strainer body to take out / remove sieve

DN	ØD	H	H1	H2	H3	L	Volume	Weight
50	220	355	155	200	210	230	1.1 L	
65	220	375	175	200	300	290	2.3 L	22 kg
80	285	450	175	275	350	310	8 L	30 kg
100	285	450	175	275	350	350	13.6 L	45 kg
125	340	490	250	240	400	400	16.5 L	65 kg
150	340	600	250	350	520	480	18 L	75 kg
200	395	600	250	350	520	600	37 L	110 kg
250	445	700	335	365	600	730	65 L	160 kg
300	505	1000	400	600	720	850	124 L	240 kg
350	565	1100	450	650	800	980	178 L	315 kg
400	670	1200	500	700	950	1100	212 L	445 kg
450	670	1100	500	600	950	1200	305 L	460 kg
500	780	1450	600	850	1125	1250	476 L	645 kg
600	895	2000	900	1100		1450	526 L	

DATE:
09-01-2017

REV. DATE:
15-06-2017

econ[®]

DRAWN:
RW

CHECKED:
RvdM

DWG. Nr.:
1167

REV.:
A